



Sewage overflows in the Māpua Estuary

Everyone in New Zealand needs a consent when they want to discharge in our environment. Each council has a 'resource management plan' which provides the rules under which discharges can be allowed for. In Tasman we have the Tasman Resource Management Plan: the TRMP.

I'm a professional working in wastewater (or sewage) and stormwater management and have worked since 1998 in and for many councils across Aotearoa in the network planning and strategy development space.

From time to time the capacity of wastewater networks is not adequate to handle additional flows caused by rainfall. Although it is not intended that rainwater finds its way into the wastewater network, it does. This is called inflow and infiltration: rainwater and groundwater find their way into the wastewater network through cracked pipes and leaky joints, through falsely connected downpipes, too low gully traps and unintended cross connections between stormwater and wastewater pipes.

Although a council can do a lot to minimise the frequency of overflows, I have never seen a network that never overflows, that is watertight. Network planning, based on a good understanding of the performance of the network, is the process to find out what can be done at what cost to minimise overflows.

Engagement with local iwi and community should be included in the process to set performance targets. These targets can then be used to justify and scope improvement works. Without a target, improvement works become reactive and are potentially expensive.

So, what is happening in our backyard?

Over the years you might have noticed newspaper articles and other notifications of wastewater (or sewage) overflows in Māpua and other parts in the region. One of the most talked about incidents in the last year was during

the big rain event at the end of August, when wastewater was pumped from the wastewater network near the pumping station at the wharf into the estuary, to avoid other problems such as overflows from popping manholes.

Early this year, the MDCA wrote a letter to the regulator at TDC asking to explain how this process is managed. The answer was very concerning. TDC states that discharges of untreated wastewater are prohibited and that consequently no consent can be given for discharges from the wastewater network.

Many other questions and comments in the MDCA letter were not addressed. When reading the TRMP, I suspect that this rule was referring to discharges of untreated wastewater from dwellings that are not connected to a wastewater

network. And yes, that would be totally appropriate and using a septic system or similar is a way to address that.

This rule is however totally inappropriate for wastewater networks because there is no way overflows can be fully stopped. It shows that overflows were not considered when the TRMP was developed, and this rule was never fixed through a plan change.

To me it shows the lack of knowledge of TDC staff and their consultants. The answer provided by TDC also shows a lack of willingness to address this problem now.



Continued on page 2



Continued from page 1

If TDC were to follow their own rule stating that wastewater overflows are illegal, enforcement action should be taken. The only action following an overflow, as far as we are told in some communication, is a clean-up activity (removing visual evidence) and sometimes a request for a 'please explain report' from the operational team.

Without an agreed (and consented) performance target I cannot see at what point the regulator is not satisfied with such a report and takes legal action. Also, none of this process is transparent, nor communicated with the community. It appears that TDC fails to monitor and enforce its own rules.

Tasman is one of the few regions in Aotearoa where the regional council environmental responsibilities and district council responsibilities such as operating a wastewater network, are combined. This is called a unitary council. In this case the discharger (network operator) and the regulator are in the same council and the independence of the regulator could be questioned.

The consequence of all the above is:

- that as a community we have no idea how bad (or good) the performance of the wastewater network is: how many overflows we experience per year.
- that as a community we have not been involved in setting a realistic performance target.
- that if an overflow has occurred, what the regulatory response to this prohibited activity has been and when the regulator would be unsatisfied and take legal action.

In summary, as a community we are left totally in the dark.

In relation to this legal stuff-up as discussed above, I suggest that the MDCA talks directly to our councillors on this topic and that further legal action is considered if no satisfactory action is undertaken.

In addition, the MDCA has also asked technical information from the network operator in relation to what TDC knows about the performance of the wastewater network. More to follow.

Please note that although I have assisted the MDCA in some actions, this article is written by me personally and not on behalf of the MDCA.

Jan Heijs, Māpua

[Next month: TDC response]



Mapua Landscapes LIMITED
03 540 3423

Landscape Supplies
Courtesy Trailers
Gardening products
Wine Barrels
Railway Sleepers
Bridge Beams-Trellis

Digger and Truck available for Retaining Walls, Driveways,
Shaping up sections ready for landscaping, house sites

15 Warren Place, Mapua www.mapualandscapes.co.nz



Shanti Massage Therapy
Relaxation and Deep Tissue Massage

Kim Saunders Stevenson
Certified Massage Therapist

178c Old Coach Rd, Mahana 540-3911



MAPUA REGATTA
Sunday 2nd April 2023
from 12.00 noon onwards
Entries from 11.30am down on
the Mapua Wharf
Outboards Under 5hp, Open Sailing,
Kayaks, Paddleboards, Rowing, RC Yachts,
all welcome
plus the Mapua Cup
Enquiries: John 03 540 2543



Old and New before the start



Loyal Grossi Point Yacht Club annual sailing regatta

The sailing began in a blustery South Westerly gusting to over 20 knots, and life was pretty exciting for the 17 yachts that launched for the regatta. Before the start, one of the Sea Scout cutters had capsized and their self-rescue was one of the day's many highlights.

Peter Murton hit the start line on the gun in his Yawl rigged Wellsford Navigator and led the Open Class mixed fleet on an exciting fetch to the first mark which was a gybe into the incoming current. The next leg spread the fleet and Lloyd Knowles took command in his Laser to record the first of his two fastest times.

Jan Mitchell sailed well to finish in third place in her Laser with the 4.7 m² sail. The cruising division saw a battle between the Idle Along 'Idol', the Sea Scout Cutter 'Pamir', and David Strong sailing 'Minisail'.

The Catamarans were cleaned out by Graham and Anna Battersby in their Hobie 16. A first race for Anna who has been in the shore team for previous regattas. Second was Chris Cowell, also racing for the first time in his Hobie Wave, and third was Brett Glass sailing his Kayak with outriggers.

Towards the end of the first race the wind died, and then quickly filled in from the Northeast, enabling the fleet to finish to windward.

Race two was sailed in a 10 knot North Easterly with frequent gusts to keep everyone alert. A downwind start meant another pile-up at the first mark, but most rounded with no problem. Lloyd Knowles hit the front early and after a close tussle right around the course finished just ahead of John and Alex in the 420.

However Glenn Stevens with crew Anne in the Phase 2 'Art Deco' were pretty close, and finishing third won them the race on handicap. Peter Walker and his crew sailed well

to record fastest time again in the Cruiser division, but the Cutter 'Tamaha', having recovered from their capsized earlier in the day, finished close to take the win on handicap, with 'Pamir' third.

The Cats were a bit more even without the Hobie 16 in Race 2 and Brett Glass had a good win in his Trimaran from Chris Cowell in the Hobie Wave.

Several Classic Clinker boats entered. Their low freeboard and traditional rigs proved no match for the conditions, and they retired early.

Uncommon boats included Julian Crane sailing his standing Lug rig Scamp class 'Swallow', and David Strong's 60-year-old Gunter rigged 'Minisail', a forerunner of the Laser.

Competitors ranged in age from 8-year-old Ruby, up to a few experienced grandparents, husband and wife combinations, and parents sailing with their kids.

Tamaha Sea Scouts were major participants with 2 Cutters, a Sunburst, and the Rescue boat. Their crews were a mixture of Sea Scouts and parents making it a real family day.

A new feature was the opportunity to go for a sail, and Averill took a few spectators for a ride in her 14-foot Cat. The spectators had plenty to watch, and a clap and a cheer as the boats crossed the finish line was a welcome touch.

The shore crew included Katrina Ballantine and Alison Howitt doing the starts, Tristan Roper, and Graham and Anna Battersby laying the marks. The Rescue Boat was skippered by Amanda Brett with Tamaha Sea Scouts Juliette Brett and Tye Incendy crewing.

Major sponsor was the Mapua Four Square – thanks for providing the Chocolate Fish traditionally given to each competitor after racing at this regatta.



Good breeze at Grossi Point



'Tamaha' has a swim



close finish for the cruisers

John Leydon

All photos by Raewyn Wood

architecture studio | mapua

- Warmer
- Drier
- Healthier

Simone Wenk
Reg. Architect (Germany), LBP Design 2 (NZ)

03 540 3282 / 021 1049 039 | Shed 4, Mapua Wharf
simonewenk@xtra.co.nz | www.architecturemapua.co.nz



Zoom Hair & Beauty
Book Online at: www.zoomhair.co.nz
03 540 2333



71 Aranui Road, Mapua

Māpua Community Library

givealittle
POWERED BY perpetual guardian

Our volunteer-run library relies on grants, donations and fundraising to cover costs. We have set up a givealittle page for members of the community who would like to support us. You can donate by simply scanning the QR code or go to: givealittle.co.nz/org/mapua-community-library

We are a registered charity and donations over \$5 are eligible for a NZ charitable giving tax credit.



NEW AT RUBY BAY KITCHEN!!

TONY'S FRESH FishShop

THURSDAY TO SATURDAY
10:30am to 4PM

RUBYBAYKITCHEN.CO.NZ
172 STAFFORD DRIVE, RUBY BAY
03 540 3530



Endurance Spraying Ltd
Pete Hughes Owner/Operator
petejulieh@gmail.com
Cell 0211 942 654

- All types of weed spraying
- Hill country gorse a specialty
- Commercial & Residential
- Lawn Spraying & Fertilising
- 20 years experience - Growsafe certified



Garry Simkin Plastering

For all Interior Plastering
027 226 1722



Tuffnell
Plumbing Drainage & Gas

Serviceing Mapua, Ruby Bay & Moutere Hills areas daily

Plumbing - Gasfitting - Drainlaying
Wastewater Servicing

Contact us to book your job or free quote today

03 543 8090 or 0800 129 683
info@tuffnell.co.nz

"We thank all our clients for their continued support"



Master Plumbers
Representing Excellence

Māpua Health Centre news

A warm welcome to Katie Lumsden who is our new Health Coach. Katie will be available for fully subsidised appointments on Wednesdays.

The role of a health coach is to help build people's motivation and capability to better understand and self-manage their physical and emotional wellbeing needs. A health coach supports people and their whānau to access community and online resources and supports, to enhance their social, emotional and physical wellbeing.

We also have a new student nurse, Sophie, with us as part of her clinical training for this month.

We are expecting Flu vaccines to be available this month for those patients that meet the MOH criteria:

- Patients 65yrs and over
- Pregnant women
- Patients with chronic conditions
- Young children with a history of severe respiratory illness

Our staff will be in contact with those who have had the vaccine in previous years to organise when to come.

For younger patients' and teenagers' psycho-social concerns or difficulties, there is a fully confidential medical service available throughout the working week, and medical costs may be covered by a special PHO fund. You can check this out by simply turning up at the practice or phoning 540 2211 or email info@mapuahealth.com.

There is also a new service available through the local primary health organisation called Skylight -<https://skylight.org.nz/>. This is a national not-for-profit trust that enables children, young people, their families/whānau, and friends to navigate through times of trauma, loss, and grief by building resilience. Phone 03 539 1170 for more information.

One of this month's health events is about autism. Children and adults who have an autism spectrum disorder (ASD) look the same as other people, and due to the invisible nature of their disability it can be much harder to create awareness and understanding.

Autism and Asperger syndrome still remain relatively unknown disabilities among the general population, yet it is estimated that they are about four times as common as cerebral palsy and 17 times as common as Down's syndrome - touching the lives of over 40,000 people and their families throughout New Zealand.

ASD affects language, social skills and behaviour, and those affected are often unable to interpret the world and what is happening around them in the same way that others do. There are now many different ways of trying to potentially prevent and help improve this disorder. For more information see www.autism.org.nz.

This month's health/school events include:

- | | | |
|----|---------------------------------------|--|
| 2 | World Autism Day | www.autism.org.nz |
| 6 | Term 1 ends | |
| 7 | Easter Friday | |
| 7 | World Health Day | www.who.int/en |
| 10 | Easter Monday | |
| 17 | World Haemophilia Day | www.wfh.org/en/whd |
| 22 | World Earth Day (protect our species) | www.earthday.org |
| 24 | Term 2 starts. | |
| 25 | World Malaria Day | https://endmalaria.org |
| 25 | Anzac Day | www.rsa.org.nz |
| 28 | Safety at Work Day | www.un.org/en/events/safeworkday |

Tasman Bay Chiropractic
64 Oxford Street, Richmond

Referrals, families and all new patients welcome
Visit our website or call for more information

tasmanbaychiropractic.co.nz

03 544 4554 Monday-Saturday 



Keeping you in the game since 2002

MOWTIVATED

Lawn & Garden LTD

For all your garden needs:

- Weeding & Mulching
- Pruning & Hedge Trimming
- Push & Ride-on Mowing
- Brush Cutting
- Green Waste Removal
- Lifestyle Blocks

Something you want done not listed above?
Give us call!

Michael and Anita are a husband and wife team with a passion for providing excellent quality garden services. We are not afraid of taming wild gardens.

027 599 3304

No job too small, just give us a call. Free quotes!

MDCA March Public meeting

MDCA Constitution and changes to the Incorporated Societies Act from October 2023.

Jim Vause, MDCA Executive member has done some research on the changes that are included within the Act and gave a presentation on what MDCA needs to update within its constitution.

Cyclone Gabrielle fundraising

Helen Bibby updated attendees on the successful Garage Sale the Church and other Assn groups held to raise funds for those impacted by cyclone Gabrielle in Hawkes Bay. Their grand effort raised over \$4000.

Mapua Pump Track update

Duncan Andrews stated that the pump track upgrade had been positively received by the clubs he has approached and the initial work to tidy the area will hopefully commence in the next couple of months.

TDC Councillors' report

Cllr Christeen Mackenzie:

- Check the TDC update located within the meeting correspondence.
- MMP (Māpua Masterplan timeframe could possibly extend out to mid-2024. When the next TDC governance committee meet the MMP timeframe is on the agenda in the hope a timeline goal will be better understood.
- Paul commented – MMP is also about strategy and policy and not just infrastructure improvements. MMP needs to be a future vision for the community.
- Stafford Drive. Nowhere near as much debris has fallen from the cliff face as was anticipated. Geotech will be back when available as busy in Hawkes Bay at present. Hopefully this will occur in the last week of March. It might be weeks before the two lanes are reinstated rather than months as first thought. More in Mike's report.
- New MDBA Chair, Gordon Shaw, has reached out to Councillors and would like them to become more involved.
- LTP consultation: Christeen is going to follow up regarding the LTP consultation – will its early engagement still happen in Māpua or will it be part of the MMP consultation?
- Strategy & Planning meeting. All papers relating to last week's six-weekly meeting are online.
- Deferred Zoning. For the last 20 years TDC has used deferred zoning and are now having to reassess the lifting of deferrals. Because legal action may be taken there is information that cannot be disclosed to the public.

Cllr Mike Kinnimonth:

- Stafford Drive. In a serious rain event, road restrictions will be in place.
- McKee Reserve. Mike has received several concerns from residents and can confirm McKee Domain will be closed over the winter months. The Domain itself is looking very tidy. Some campers have been camping in prohibited areas.

Dominion Flats

A big thanks to those who help and if you'd like to join in contact Helen Bibby 0274593989

General Business

Māpua Boat Ramp:

Resource consent has not been filed as yet. The measure of tidal flows and currents needs to be undertaken.

Liquor Licencing Hearings:

Hearings for Liquorland (Aranui Road) and Nelson Holdings (corner Aranui Rd and Mapua Drive) are coming up in May at the Motueka Public Library.

Comments on the lifting of Deferred Zoning.

- TDC is one of the few councils in NZ that uses this deferment process. The deferment approach has been used by TDC for the past 20 years. . Other councils have used a similar approach, some continue to use it, others have stopped.
- A local resident has gained legal advice regarding the process of lifting deferred land zoning after being prompted by the sale of the Senior Land. It has been discovered that the process behind lifting of these deferrals may not be OK. This has resulted in the Council taking the approach that it will not make any resolutions to lift deferred zoning until the issue is resolved .
- The MMP looks at what Mapua may look like in the future, the recently completed FDS (Regional Future Development Strategy has the information about what can and can't be developed.
- The Senior slopes are currently zoned Rural 1 deferred Rural Residential. The understanding had been that once certain conditions had been met, the deferment could be lifted. This is no longer the case.
- TDC will not make any resolutions to lift deferred zoning until the issue is resolved. However, landowners can apply for the appropriate resource consents without lifting the deferment,
- The issue does not affect resource consents that have already been issued.
- The legal process is challenging TDC process to whether it is legal or not.
- TDC may have been acting in good faith throughout this process and with additional information that has come to light in the past week, TDC has to reassess its processes with regard deferment.
- TDC staff are dealing with it and need to seek legal advice.

A resolution has been made by TDC to ask staff to scope a possible plan change: yes, it can have a plan change or no it can't. Councillors will keep MDCA updated on any decisions regarding this.

Will Councillors be able to publicly report on the workshop outcomes with the community? Workshops do not have minutes taken, but in preparation for the workshop TDC staff prepares and presents several power point presentations which should become publicly available.

Continued on page 7

Māpua Fire Brigade



Feb to Mar 23 call outs

15 Feb 19:30: Glass house on fire off Brookview Heights. Found an unpermitted fire of pallets and some carpets. With Motueka Fire, put fire out and told owner he needs a permit and not to burn carpet.

23 Feb 10:10: House truck fire at the Māpua Leisure Park. Wooden lid put down over a working gas top. Minor damage to inside truck. Bystander and owner used fire extinguishers to put fire out. Brigade used thermal imaging camera to find hot spots and dampen down.

16 Mar 20:16: Oil spill at intersection of Dominion Rd and SH60, and at Dominion Rd and Old Coach Rd. Used absorbent material and high-pressure hose to clear oil.

Call outs for the year = 12

Safety Tip – Be safe

Clean and check your chimney before lighting a fire in your fireplace.

For fire safety info go to - <https://fireandemergency.nz/>

For fire permits go to - <http://www.checkitsalright.nz/>

We are also looking for some new members to join the brigade who would be available in the day time. If interested come see us at 3 Iwa St after 7 pm Thursday evening.



Māpua & Districts
COMMUNITY ASSOCIATION

Continued from page 6

TDC has answered the following questions:

Q: Does the land in deferred zones have to be set back to the original zoning prior to deferment being placed on it?

A: No, a deferred zone is a zone in its own right. Where there is a deferred zone, a plan change has been completed that complied with the RMA requirements.

Q: What is the current zoning of 166 Mapua Drive?

A: It is Residential. Top of the South Maps has the up to date zonings

Q: How will the pending legal action impact on the MMP timeline?

A: It will have no effect. Note to date that TDC is not aware of any legal action on deferred zoning in the TRMP being lodged with the courts.

MDCA works closely with TDC to ensure our community functions in a way that suits the majority of our residents. To have a vote that counts, become a financial member of MDCA by simply paying \$10.00 per person per year into our NBS account 03 1354 0356471 using your name and phone number as references.

Next Public meeting to be held on
Monday 10th April, 7pm, at Māpua Hall.

ANZAC Day

On Tuesday the 25th of April ANZAC day services will be held in our region. These services are open to the public and provide an opportunity to remember those who have served our country and those who have passed.

Māpua:

Parade – 10.45 am starts adjacent to tennis courts
Service – 11.00 am at Mapua RSA Memorial Library

Tasman:

Service – 10.00 am at the Memorial

Upper Moutere:

Service – 10.00 am at the Domain

The **RSA Poppy Day** this year is on 21st April. In conjunction with our collection boxes around the region we have a stall outside the Mapua Four Square for the day. We are looking for volunteers to assist with the collection by manning the stand for two-hour blocks.

If you are willing and able to assist, please contact Nic at 021 220 3920

Admin and Accounting

Bookkeeping | Tax Returns | Understand | Grow

We believe in helping you make intentional decisions and applying clarity and purpose to your business actions

Diane Malsey
Phone 027 444 6387
www.adminandaccounting.co.nz





Suzie Brosnahan

Celebrant

Bringing Together Moments To Treasure

By becoming a celebrant I have the privilege to work alongside people as they experience milestones and important occasions in their life's seasons. I aim to create and professionally deliver a ceremony personal to you, giving you a lasting memory to treasure.

www.sayyesenterprises.co.nz/suziebrosnahancelebrant
✉ bookings@sayyesenterprises.co.nz or ph: 027 378 8277
f www.facebook.com/suziebrosnahancelebrant



Motueka Appliance Repairs

Specialising in Home Appliances
In Mapua Regularly
Call Dan **022 4568 068**

Moutere Hills RSA Memorial Library

Māpua Community Library

Book sale

Check out the book sale being held at the library on **Easter Sunday 9th April**, commencing from 9am.

Computer hardware upgrade

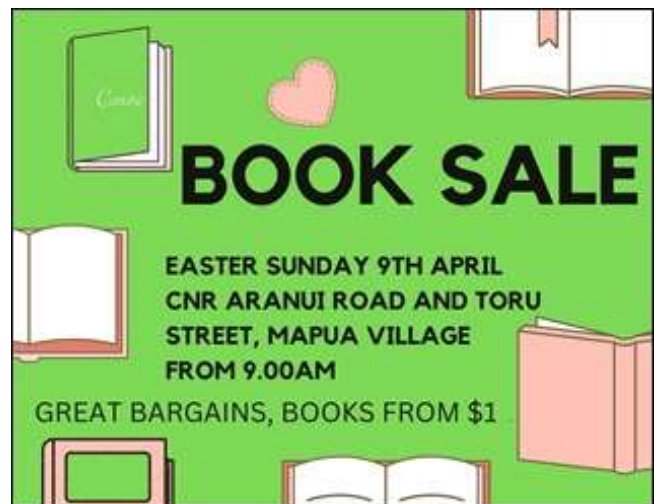
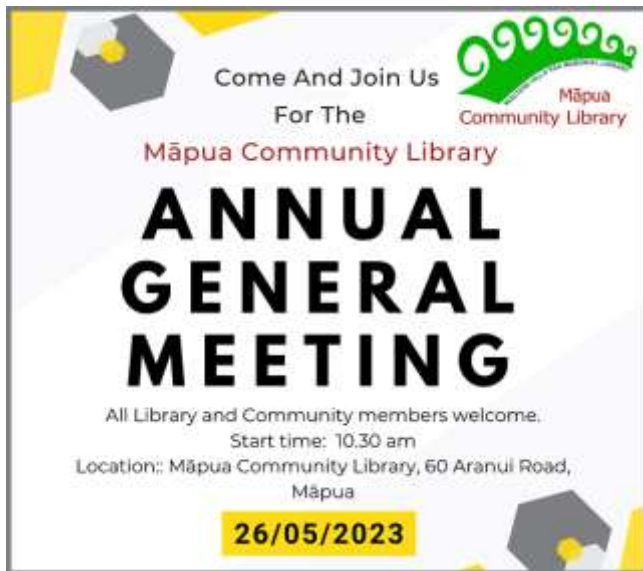
The library recently upgraded their computer hardware, and we now have nice new screens, printers and hard drives. Special thanks to the NZ Lottery Grant Board and the Rata Foundation who helped fund this project. Phase 2 of the upgrade will take place during May.

New website

This has now gone live. Check it out at <http://www.mapua-community-library.wordpress.com>.

Audio books

We recently exchanged our audio books with the Richmond Library, so there are now new children's audio books plus several new adult books available to take out on loan. Great for those long car journeys.



Hills Community Church

As a church community we were recently asked this question: 'What is most important?'

And what stood out from our reflection on this question was an affirmation of the Māori whakatauki (proverb):

He aha te mea nui? He tāngata, he tāngata, he tāngata.

What is the most important thing? It is people, it is people, it is people.

In all that we do as people, our family relationships, our work, our community life and even our own individual journey with God; What is most important? It is people.

We live in a world in which it is very easy to become so focused on tasks, projects and material wealth, that we

forget that what is far more important – is our relationships with one another.

This month I need to share some news. After 10 years of ministry here in Mapua through Hills Community Church, the time has come for us to step into a new path for the future. We don't know what that path will look like or where it will lead but for now we will continue to be based as a family in this area.

It has been an incredible privilege to serve as minister of the church and community here.

Māpua is an extraordinary community to be part of. And it has been a blessing for our family to share the journey for what has been an amazing season. But what stands out above all, is this; What is the most important thing? It is people, it is people, it is people.

Blessings in Christ.

Rev John Sherlock

Book Reviews

The March Book Review was left out last month due to technical problems.
It is included this month along with the April Review.

“NAVIGATION” a memoir by Joy Cowley.

First published by Penguin 2010

“Navigation” is a down to earth and beautifully written memoir by one of NZ’s favourite children’s authors. I have recommended it to others who have been as delighted as I have with her book. She refers to it as “a collection of anecdotes viewed from a place of deep gratitude.”

Joy has the ability to combine warmth with expressive, intelligent writing and to convey her abundant life’s experiences with humour, candour and a notable lack of ego. Notable because she has achieved so much in her 86 years.

For example: she has been the recipient of an OBE for services to children in 1992; an Honorary D.Litt from Massey in 1993; a Damehood in 2009 which she turned down; an Arts Foundation NZ Icon award limited to only 20 living people in 2020; and many more literary awards too numerous to mention.

She is the much-loved author of over 600 titles for children, including special readers for those with learning difficulties like her son Edward, and over 40 children’s picture books most of which have been read and translated worldwide. (Her Mrs Wishy Washy series has sold more than 40 million copies in the USA alone.)

One of her adult novels “Nest in a Falling Tree,” was made into a film by Roald Dahl. She has been the generous provider of inspiration for writers and healing for others at her retreat house in Fish Bay in the Marlborough Sounds. Joy refers to it as her *tūrangawaewae*, her source of stories and creative energy, and has placed a QEII covenant on it in perpetuity for others to enjoy.

And most importantly (together with husband Terry) she has been the loving supporter of her large family of four children, 13 grandchildren and 2 great-grandchildren whom she likens to “a village” when they gather together in Fish Bay for holidays and significant family events.

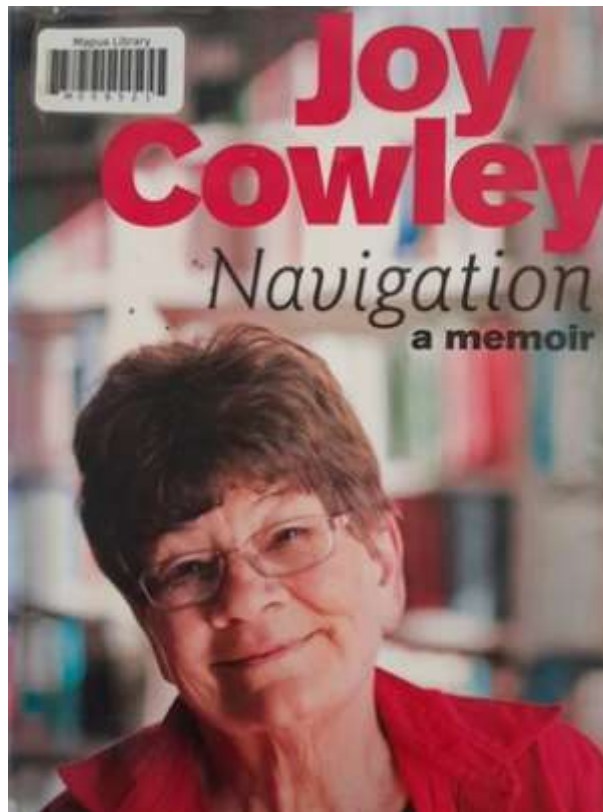
This huge list of achievements has grown from humble beginnings. “When I was young the only book in the house was the Bible.” And today at 86, Joy continues to write and passionately support the arts even though she has lost 90% of her sight.

But back to the book.

I loved her evocative descriptions of the natural world at Fish Bay, her grounding place. “Morning air is cool here,

even in summer, and everything is so wet with dew it is as though the sea has crept over the land in the night.” I also enjoyed her memories of early life, growing up as the eldest of 5 children, with all its serious, time-consuming responsibilities.

Desperately needing the opportunity to read she would do so while riding her bike to school, a book propped up on the handlebars. One day, fully absorbed, she ran into the back of a parked van and broke her nose and that was the end of that pursuit!



Then there’s her engaging account of life as a dairy farmer’s wife and young mother of four, managing the joy-filled chaos of child rearing along with the demanding physicality of milking duties. “We allowed our pre-schoolers to sleep on the lawn in cardboard boxes – because they wanted to – and showed them how to warm their feet in a fresh cowpat.”

It was a life she loved with Ted and the children – for the first time feeling her youthfulness and freedom. Sadly, all too soon came the shattering dissolution of the marriage and subsequent new roles for Joy as resourceful, solo mum and developing writer.

The descriptions of her later, successful marriages to second husband and mentor Malcolm Mason, (Malcolm died tragically

from cancer in 1985) and third husband Terry Coles an ex catholic priest (recently passing away in September 2022) express her defining qualities and values: the importance of love, sense of humour and adventure, connection with nature and awareness of the spirit.

“We belong [Terry and I]. Even when we are standing at opposite sides of the room it can be difficult to know where one ends and the other begins.” And “The wild bees no longer sing in the blood but the honey they leave behind is exquisite.”

I applaud her attitude to old age as expressed towards the end of the memoir. She has wisdom and much to offer readers entering their later years. She likens ageing to the life of a fruit tree – growing, blossoming and bearing fruit. The fourth stage is the most fulfilling. “With much pleasure I am going to seed.” And, making reference to her love of the sea: “If I walk past a mirror and look beyond the reflection I see an old woman, sloppy, forgetful, still in love with life, paddling a leaky boat on an ever-increasing ocean of light. It is all exactly as it should be.”

“Navigation” is available in the Māpua Library.

Book Reviews

Why do we read? I read to gain more understanding of human beings and the world we live in. Sometimes I hear people say, “I only read fiction” or “I only read non-fiction”.

A fictional story can give me new perspectives and insights into people’s reflections, motives and approaches as they grapple with what life throws at them. It can broaden my experience as I see the context for their actions, and it takes me out of my immediate concerns. Non-fiction stories also, can give me an opportunity to experience vicariously, issues, places, and people I would

not necessarily be involved with. In this review, I am going to share with you two non-fiction books, which have touched my heart lately.

Well-written works of either genre can help us enter into another world for the duration of the book. Sometimes I can escape into the story and wish I were there too, and other times I am confronted and glad that this is not something I myself have to deal with.

Both books available at Māpua Library.

Annette Sivak

***When they call you a terrorist: A Black Lives Matter Memoir* by Patrisse Khan-Cullors and asha bandele, 2017,**

Patrisse Khan-Cullors says she is not a “terrorist” but rather a “survivor”. She takes the reader right into her world and into situations that most people in America do not have to face; the tensions that come with the colour of one’s skin.

Things like learning that “being black and poor defined (her) more than being bright and hopeful and ready to learn”.

Things like her loving 19-year-old brother (later diagnosed with schizophrenic disorder) being taken away and “in jail for two long months before (they) can even locate him” even after repeatedly approaching authorities and not being listened to. They found out later, that he had been beaten and tortured in police custody,



rather than been given any medical treatment. Then when he was eventually released, her family was left to deal with his debilitated state and afraid to approach the police with his outbursts, for fear he would be shot and killed rather than subdued and given help.

Khan-Cullors weaves her own life story among the incidents which happened to other young black men (and women) that became the catalyst for her and asha bandele to start the movement that became “*Black Lives Matter*”.

Although this book was disturbing to read and to realize that all these things are real-life-

experiences for some people, I recommend it as necessary to the understanding of several issues currently raging in the news in America, and in another place where discrimination stifles people’s growth and lives.

***About a Girl: A Mother’s powerful story of raising her transgender child* - by Rebekah Robertson, 2019**

Robertson took me again into a world I knew nothing of and into another issue often arising in the news. She gave birth to twin boys George and Harry in 2000. By the age of three, it became clear that Georgie was drawn to things associated with being a girl, and by the time she went to school, was insisting that she *was* a girl. Her parents were determined to let Georgie be who she thought she was, which was OK when she was at home, but it was a hard road to walk through various schools.

From schools where Georgie was bullied for being a less-than-masculine looking boy, to schools where she presented as a girl, and tried to quietly go about her daily life, but was harassed when people found out her secret.

Life was hard enough, but then puberty was on the horizon. So, one’s personal individual concern became part of a national issue: the question of whether being allowed to take puberty-suppressing drugs while waiting for the time when one could have gender-changing surgery.

Holding back puberty, made the transition to another gender both smoother and more effective. At this point, Georgie’s mother banded together with other



parents of transgender children to work towards changing the Australian laws in order to allow for this to happen. They were successful in time for Georgie.

Georgie Stone, who wrote the Forward for this book and is herself active in bringing more understanding to gender issues, encouraged her mother to write her (and the family’s) story to be inspiration for other transgender children and their families.

Robertson weaves her family’s own life stories among the incidents that became the catalyst for her to start a movement called “Transcend”, a support group for others on this journey.

It was often saddening to read of a child’s distress, and to realise what other parents have had to handle in their families, but I recommend this book as important for understanding what is becoming a more visible issue these days and will touch many of our lives.

These determined women authors—Patrisse Khan-Cullors, asha bandele, Rebekah Robertson and Georgie Stone - have broadened my understanding of race and of gender, and deepened my awareness of what accompanies each. The perspectives I have gained from these two books have helped make me a more compassionate person.

PERRYS
AUTO SERVICES
MAPUA'S ONE STOP AUTO SHOP

Trailer Hire
Hire 4X and
5th hire is free!

Come in collect a
loyalty card.
Conditions apply.



NPD Fuel Cards • SuperGold Cardholders welcome
Repair & maintenance workshop • Electrical & air con work
24 hr Breakdown: Call AA if you are a member or 021 540 286
T: 03 540 2866 | E: perrys.auto.services@xtra.co.nz
www.perrysautoservices.co.nz | Find us on Facebook @perrys9829

Lynda's Exercise Classes in the Mapua Hall
Term 2 starts Tuesday April 4th and runs for 12 weeks
until Friday July 7th.

Regular fitness and Strength classes for all levels.

Cardio/Weights Tuesday 6 pm,
Old-fashioned Aerobics Wednesdays 9.15 am,
Cardio/Weights, Pilates
Wednesday and Friday 10.15 am.

5-trip ticket \$50; 10-trip ticket \$80; 20-trip ticket \$150;
30-trip ticket \$210. Casuals – yes, \$12 per session. Top-ups
for single sessions on your ticket \$10.

Please contact Lynda for details,
lynda@hht.co.nz 027 222 1491.

Tess Wood
CERT. NUTRITION HEALTH AND
WELLNESS COACH

+64 (0) 27 422 7155
tess@twhealthcoach.co.nz
www.twhealthcoach.co.nz

Professional Member HCANZA
- Health Coaches Aust NZ Assoc

CERTIFIED

Promoting Health and Wellbeing in our Community.
Book a free consult to explore your options.
Check out my Website for more information.



Electrical Laser
ANTIDOTE APPLIANCE REPAIRS

Laser Electrical Motueka and Antidote Appliance Repairs
Proud to be 100% Locally Owned and Operated

- Air Conditioning and Heat Pump Installation, Cleaning and Servicing
- Domestic & Commercial Wiring
- Appliance Repairs
- New Builds or Renovations
- 24 hr Callout Service

Contact Greg and Donna Bradley
- 03 528 9071
- 027 243 2212
- 9a Monahan Street, Motueka
- motueka@laserelectrical.co.nz
- laserelectricalmotueka.co.nz



Totally Dependable Guarantee

“Degrowth”

Presented by Dr Mike Joy

The Local Matters group is delighted to welcome Dr Mike Joy back to the Tasman District for a presentation at Māpua Hall on the 17th of April. This presentation will outline the transformational change we need to make in order to stop overshooting our ecological limits.



An increasing number of scientists from many disciplines, are advocating for a reorientation of our social and pro political priorities by abandoning economic growth as our overriding priority.

In a recent Newsroom article by environment writer Dr Catherine Knight ‘degrowth’ is described as follows:

‘Degrowth advocates do not suggest the carte blanche reduction of economic activity. They propose the downscaling of parts of the economy that do little to contribute to human wellbeing while causing enormous harm to the environment. Advocates of degrowth propose the expansion of sectors that will support our transition to an economy that operates within planetary boundaries.

Such sectors include renewable energy generation, public transport, social housing, the health and care sectors, education, environmental restoration, and sustainable food production, among others.’

Dr Joy is an ecologist and senior researcher at Victoria University. He is well known for his expertise on climate change and for his outspoken and courageous climate advocacy. Dr Joy says that degrowth is inevitable and that ‘the choice is ours; managed or a train wreck.’

‘We need to stop overshooting planetary boundaries and put policies and incentives in place that prioritise ecological and human wellbeing over economic growth.’

Dr Joy will provide an up-to-date overview of the intensifying impacts of climate change. He will debunk the negativity around degrowth and will paint a picture of our future world and lives if we embrace degrowth.

“Degrowth” talk by Dr Mike Joy

Monday 17 April 7.30 pm at MĀPUA HALL

Door sales only - \$10 ticket, students with ID free.

Supper included.

This is a Local Matters event, organised by the Motueka Branch of the Green Party of Aotearoa NZ.

MAPUA AUTO CENTRE
“YOUR AUTOMOTIVE SPECIALIST”

Fully Equipped Automotive Workshop | All Makes & Models | 6 Courtesy Cars | W.O.F.

20 WARREN PL, MAPUA, NELSON 7005 | PH 03 540 2180



Network Tasman Trust

Night time vision and coastal bird protection

When it comes to tennis, looking for a small yellow ball flying through the air requires plenty of light, which makes it a daytime sport, unless...

“As a club we worked out two years ago a strategy for improving the service we provide to the community and one of the things we identified was a limitation in playing time, particularly over the winter months on those courts... We’re now at that point where we’re looking to develop it.” says Tony Jemmet, Māpua Tennis Club President.

Last year Network Tasman Trust allocated \$160,820 in grants to 84 not-for-profit organizations in the Nelson Tasman area and the tennis club was one of the recipients.

“This is the first funding and support we’ve received, so it's kind of spurred us forward. The grant is small in the grand scheme of things, but it was a catalyst for us [to get more funding]. We’ve got about 160 members now and we're hopeful the lighting providing extended hours will also increase the availability of those courts for wider community use.”

Another recipient of a Network Tasman Trust grant was Kina Bird Song, which is made up of a small number of volunteers that operate under the umbrella of the Tasman Environmental Trust. Spokesperson, David Easton says their primary role is to trap predators along the coastline to protect native bird species.



“We’re having a lot of success. We’ve trapped 2000 predators in the last five years. We have a unique environment along the coastline here with things like oyster catchers, banded dotterel, and weka chicks between Motueka and Māpua. And we have blue penguins nesting which we haven’t seen for many, many years.”

“The Nelson Tasman Trust has been a great help to us. They’ve probably given us enough money to buy 20-25 DOC200 traps which are suited for weasels, stoats, ferrets and rats. Keeping the predator numbers low makes our local community and our public areas a far nicer place to be.”

The next funding round for Network Tasman Trust community grants will be in July 2023. More information can be found at www.networktasman.co.nz





EFFECTIVE SIGNAGE

WHEN EVERY MINUTE COUNTS



- STICKERS
- CORFLUTE & ACM SIGNS
- VEHICLE & BOAT WRAPS
- LED | 3D | ILLUMINATED SIGNS
- VINYL & DIGITALLY PRINTED GRAPHICS
- MANUFACTURE & INSTALLATION

nelson | tasman | marlborough P 021 768 407 E paul@signsontime.co.nz signsontime.co.nz

DOG TRAINING

*Mary Chaffey
Canine Behaviour Consultant
and Endorsed Trainer*

*From basic polite manners to
serious behaviour problems*

**GROUP CLASSES
PRIVATE CONSULTATIONS**

Contact Mary Chaffey: 021 288 0881
www.k9mana.co.nz k9mana@gmail.com

Decor 8 with Distinction
QUALIFIED PAINTER & DECORATOR

Simon Noake
M: 021 751 073
E: decor8@xtra.co.nz

Our latest news & adventures

Manaaki Tāpoi students visit Upper Moutere School

Recently our Manaaki Tāpoi secondary students had a wonderful visit with Upper Moutere School students to introduce them to waiata, kemu (games) and even a new haka pōwhiri that was written by one of the students. It was such a fantastic cultural exchange for everyone involved, and an opportunity for the rangatahi to share their knowledge. Ka rawe te mahi!

Trades Students explore the Abel Tamsan

Ngā mihi nui to Network Tasman Trust for funding us to purchase awesome new duffel bags! These make transporting participant gear on our programmes so much easier. Recently our Manaaki Tāpoi Level 2 and Tourism Operations participants headed out with them into the Abel Tasman National Park on a waka journey followed by an exhilarating day of ziplining, abseiling and jumping off rocks with Abel Tasman Canyons!



Our Manaaki Tāpoi students teaching mau rākau - the performance art of traditional Māori weaponry - to UMO School pupils



The sweetest gift

As part of larger site development at Whenua Iti we have hives on site - they encourage bees to the site, aiding the growth of our plants and also provide us with honey! This is a great teaching opportunity and discussion with tamariki, and they really enjoy making bush tea from manuka on site, sweetened with our own bush honey of course. There are even plans afoot to use the beeswax for lip balms - we'll keep you posted.

Ngā mihi nui to the Moutere Hop Crew!

We had a great time attending the Hop this year and are incredibly grateful to the funding support from the proceeds raised by the event, which will go towards our facilities development. It was a fantastic turnout, the weather certainly played ball and we enjoyed running fun activities for tamariki including a treasure hunt for native birds and an orienteering course. See you next year!



Students with Abel Tasman Canyons as part of the Tourism Operations Trades Programme

We'll see you out there!

www.wio.org.nz





MĀPUA HALL NEWS

72 Aranui Road Māpua | māpuabookings@gmail.com | 03 5402330

MONDAY	TUESDAY	WEDNESDAY	THURSDAY	FRIDAY
9.00 am SUPERB DANCE Move Good Now	9.00 am PANZ Pastel Artists of NZ	9.05 am AEROBICS with Lynda		9.05 am STRENGTH / CARDIO with Lynda
	9.00 am SIOUX LINE DANCE	9.15 am SLOW YOGA with Nikki	9.30am MĀPUA ART GROUP	9.15 am YOGA with Martin
	10.00 am MĀPUA CREATIVE FIBRE 2nd Tuesdays	10.05 am PILATES with Lynda	9.30am TAI CHI INTERNAL ARTS	10.05 am PILATES with Lynda
3.30 pm BALLET 3-4yrs Kerry Clarke Dance		11.30am TAI CHI INTERNAL ARTS		
4.00 pm BALLET 5-7yrs Kerry Clark Dance				2.00 pm FRIENDSHIP GROUP 3rd & last Fridays
5.30 pm BROGA YOGA with Nikki	6.00 pm STRENGTH / CARDIO with Lynda		7.30 pm MĀPUA COMMUNITY CHOIR	
7.00 pm MĀPUA HALL SOCIETY Meeting 3rd Mondays	6.30 pm YOGA with Martin			
7.15 pm MDCA PUBLIC MEET 2nd Mondays				

Packhouse Cinema

MURIEL'S WEDDING

- Sunday 23rd April, 6.30pm
Regular screening
- Monday 24th April, 10am
Bring your Baby!

All sessions Tickets \$12 at the door:
BYO chair and snacks.

Membership: 1st April - 31st March

From \$20 per person

Visit our website to register for
Māpua Hall Society Membership,
benefits include:

- Hall Society E-Newsletter
- Regular activities info
- Event news
- Pre-sales for Māpua Hall Society events such as PechaKucha
- Vote on matters at the AGM
- Financial support for your Hall.

Hall Society News April 2023

Lynda returns on 4th April for **Aerobics & Pilates** classes; **Restorative Yoga Workshop** with Nikki on Sunday 30th April. Some classes and groups will break over the School holidays from **7th-23rd April**, for latest Hall schedule and class times check the Live calendar on the website.

Packhouse Cinema is back on and we wish to welcome Corene & Alice who will host the movies on Sunday nights with a '**Bring your Baby**' screening the following Monday morning. So bring your own chair, snacks and your baby!

The **Māpua Easter Fair** returns to Māpua Hall and on the Domain on Sunday 9th April. We encourage visitors to bike with connections available on the Great Taste Trail and Māpua Ferry service. To keep our village clean the Easter Fair strives towards ZERO WASTE, please help us move towards this goal by bringing your own: water bottle (free water available), coffee cup, plate & utensils and reusable bags.

For events, updates & news follow us:

@MapuaCommunityHall
www.MapuaHall.org



Packhouse Cinema

Sunday 23rd April, 6.30pm
 'Bring you Baby' edition
Monday 24th April, 10am
 Bring your own camp chair, snacks & drinks.

MAPUA HALL
 PACKHOUSE CINEMA



A comedy about a small-town girl who didn't fit in, but is about to learn how to stand out.

mURIEL's Wedding
 she's not just getting married, she's getting even.

Proudly Supported by
 architecture studio | mapua | SPRIG & FERN

THE COOL STORE GALLERY



showcases works of over 100 established & emerging artists from Nelson & the West Coast regions.

Come & browse & chat with our friendly staff.

Open Daily in summer 10am-5pm
 later in weekends

Tricia Morrison
 7 ARANUI ROAD
 MAPUA, NELSON
 Wk 03 540 3778
 Hm 540 3005

MOTUEKA COASTAL BUS



*Motueka – Tasman –
 Māpua – Richmond Sundial Sq.*

TUES / THURS / SAT – RTN FARE \$10
 Departs Motueka i-SITE 9.30am –
 Return departs Richmond Pool 2pm

BOOKING ESSENTIAL
 – Motueka i-SITE 03 528 6543

www.ntctt.org.nz / office.ntctt@gmail.com

Ruby Coast Running Club

In March we had a great turnout at our regular Thursday 5km events. As well as lots of walkers and runners we had a baby in a stroller and even a four-legged fur baby too! It is great to see everyone out there. We had a couple of particularly windy evenings too – so extra kudos to everyone for battling the wind.

Our members have been busy tackling lots of interesting local events too.

Near the end of February a group attended the Mount Robert Fell Run in the Nelson Lakes National Park. Starting by Lake Rotoiti in St Arnaud the course went up the road to Mt Robert carpark and then around the Mt Robert loop (up Pinchgut Track and down Paddy's Track), and then back down the road to the finish.

At over 18 km and 800 m elevation it was definitely a challenging event. However, it was well worth all the exertion for the stunning views. We are very lucky to have such a special place on our doorstep.

Then in March, we had a group don their head torches for the Spooners Tunnel run. A unique event involving a run of approximately 15 km along the Great Taste Trail from Belgrove to Kohatu and through Spooners Tunnel.

Next up was the Athletics Nelson Wakapuaka Country Club pub run. At around 5km, this was a shorter run, but with over 250m elevation there was no respite from the hills. Our RCRC members had a fantastic result with the top three women's placings and second and fourth men's placings. Congratulations to Dawn (1st female), Christine (2nd female), Debbi (3rd female), Richard (2nd male) and Graeme (4th male).

All this hill running is good training for the upcoming Harris Hill Top Challenge on 25 March. This event is hosted by the Summer House which has views right across Nelson and Tasman Bay. There is a 7 km course with 350 m elevation or a 10 km course with over 650 m elevation. At this stage we have a number of runners entered into the 10 km event. We will be running for a good cause as all the profit from the event goes to Ronald McDonald House. Fingers crossed for fine weather so we can enjoy the amazing views.

Come and join us! We welcome new members all the time and we have no joining or membership fees. Our Thursday 5 km events start at 5.15 pm for walkers and runners that need more than 30 mins, and 5.30 pm for everyone else. We meet by the children's playground in front of the hall. We are also on Facebook: Ruby Coast Running Club. You can find out more about us there, including details of our longer weekend runs and upcoming events.

K Welsford

Tessa Mae's
 WITH ATTITUDE



Gifts & Homewares in The Village

OPEN 7 DAYS

Looking for a new business opportunity?

Quick Start
Business Opportunities Available!



Get your work-life balance right with a CrestClean Franchise

CrestClean is NZ's largest franchise system, with more than 700 operators nationwide. Over the past 25 years we have become a market leader in the cleaning industry, and the demand for our cleaning services continues to grow. We need more teams now!

With CrestClean you will enjoy regular contract revenue without facing the normal hassles and burdens of running your own business. There is no selling required.

A successful business opens the door to achieving financial goals in life, such as home ownership, investments and owning rental properties. A high percentage of CrestClean franchisees have been able to buy their own homes.

We have finance options available to help get you started, and our award winning franchise system gives you lots of support so you can enjoy operating your own successful family business.



Watch our franchisees' stories in 8 languages

Franchise opportunities are available now in Nelson and Blenheim



Crest Clean



Call Barbara on 027 706 7095 or visit our website to request our Franchise Information Booklet
0800 273 780 | crest.co.nz





the playhouse

Coming Up April

**21st and 22nd April
Grease Tribute
by the Harmony Hunters
Full Live Band**

**29th April
Paul Madsen's
Queen Tribute
Full Live Band**

**30th April
Open Wedding Day**

**May 5th
Alan McElroy and Friends
Irish and Scottish
Comedy Night**

**May 13th
The Underground and
Viami Mice
Full Live Band 80s Night**

Māpua Craft Group

The Craft group was pleased to offer cards (see photo), books, a variety of plants and various other items to the Flood Relief garage sale earlier last month. We understand that a total of \$4000 was raised.

Our focus is now on Easter and of course food such as Simnel cake, eggs, hot cross buns, and chocolates.

Ella was given about 100 crocheted squares that will be made into a blanket for Operation Coverup.

The companionship at each meeting is a blessing and we are able to share and solve problems that help each other in many small ways.

We wish a Happy Easter to all our readers and may we all enjoy the colours of Autumn.

Barbara Halse (5403901)



Gavin Lambert
Master Painter

CRAFTSMAN PAINTERS & DECORATORS
 GAVIN LAMBERT (OWNER)

Ph: 03 540 2748 Cell: 021 476 318
 Email painter@scorch.co.nz / 26D Jessie St, Mapua, 7005
 www.lambertdecorators.co.nz

KINA BEACH BEAUTY
Suzie Brosnahan
 Beauty Therapist {ITEC; CIDESCO}

At KBB, I offer a range of essential beauty treatments together with relaxation therapies in a tranquil environment. Why not allow yourself the luxury experience of a Waterlily Spa Facial, rejuvenating both mind and body.

Visit our website for a full list of treatments and prices. Gift vouchers available.

<https://www.sauyeesenterprises.co.nz/kinabeachbeauty>
 Ph: 027 3788277

Motoring with **MAPUA AUTO CENTRE**
 YOUR AUTOMOTIVE SPECIALIST

WARRANT of FITNESS (WoF)
 OWNER RESPONSIBILITY and the LAW

Vehicle safety is serious business. The continued safety of vehicle drivers, their passengers and all other road users is paramount. This is the reason behind regular audits of all WoF issuing authorities. The frequency of the audit is then determined by the results.

Before a site can issue WoFs they must first comply with standards set by NZTA. Once standards are met they are issued with a 'Certificate of Authorisation'. Likewise, each WoF inspector must sit theory and practical exams, testing both their knowledge of the rules and their practical abilities. Upon passing these exams they are issued with a 'Certificate of Appointment'. Both of these certificates must be publicly displayed on site.

The purpose of WoF checks is to ensure each vehicle using national public roads attain minimum safety standards. If problems are identified during a WoF check, repairs need to be done before a current WoF will be issued. It is illegal for a vehicle to be used on the road without a current WoF.

When a vehicle has been inspected by an approved WoF inspector and has complied with all inspection items, a current WoF label is placed on the top right hand corner of the front windscreen. This label shows this vehicle has been visually inspected and was roadworthy at the time of the last inspection.

Keeping your vehicle safe and up to WoF standards between inspections is crucial for you, your passengers and all road users safety and is legally required.

Happy & safe motoring from the team at **MAPUA AUTO CENTRE**
 YOUR AUTOMOTIVE SPECIALIST

The Write Bias

News from Māpua Bowling Club

Lots of good bowling happening at this, the back end of the season.

It is good to see our new members attending regularly and showing great improvement. The green is playing really well and there have been some very close games and a lot of fun. But there is always time to sit down, chat and win your game from the bench as Colin and Wally are demonstrating!

Ian Benbow and Karen Clark are to be congratulated for being the first members in living memory to enter the Mixed Pairs at the Nationals in Central Otago – around 100 entries so a very tough challenge. They didn't make it through the group stage but reported a tremendous experience and hopefully one to be repeated next year.

Warren Keith made it to the final of the Veteran Singles Champ of Champs where he was beaten by an in-form Lloyd Bellis from Stoke Bowling Club.

The annual Wadsworth Trophy is held at Havelock and two of our ladies were selected to represent the Nelson Centre. Congratulations to Debbie Win and Di Blanchet.

We have enjoyed having weekly visits from some of the children from Māpua School. In groups of 16 they attended for an hour of coaching. This was all about basic principles and more about fun than serious coaching, but we hope it might have sown a seed for the future. There were certainly some promising bowlers in the mix. We look forward to them joining us again next year.

For any information about bowling, coaching or booking the clubhouse and facilities, please contact the secretary, Di Blanchet on 03 540 2627 or check out our website, sporty.co.nz/mapuabowls

Sue England



Coastal News Advertising Costs

Ads go by the size in column centimetres.

Columns are 8.5 cm wide and costs are as follows:

\$2.50 per cm up to 6 cm \$3 per cm up to 10 cm

\$4 per cm over 10 cm \$48 ¼ page

\$60 ½ page \$80 full page

With 20% discount for long-term advertising (3+ months) and prompt payment by internet banking only. The deadline is the 20th of each month with each issue coming out on the 1st. Printed by TDC.

There is no separate January issue.

E: news@coastalnews.online for more information.

- Spot Checks
- Mole Mapping
- Skin Cancer Surgery
- Treatment of other Skin Conditions


 **KIWISKIN**
Māpua Skin Clinic

Telephone: 03 540 2373

Email: mapua@kiwiskin.org.nz

Website: www.kiwiskin.org.nz

Address: Unit 9, The Village Māpua
66 - 68 Aranui Road, Māpua 7005



Coast & Country
**Chiropractic
Centre**
Dr. Ron Howard
ACC registered
coastandcountrychiropractic.co.nz

Mapua 105a Aranui Rd 03 540 2068
Motueka 2 Wilkinson St 03 528 8880

+ Māpua Pharmacy 03 540 3735

- Prescriptions
- OTC medicines
- Vitamin supplements and health products
- Trimethoprim supply
- Vaccinations
- INR testing
- Sildenafil supply
- Emergency contraception
- Post Centre



Lynette Graham.
Original Designer Activewear shop online
www.lynettegraham.co.nz

Be different & make a difference be dressed with critical choices

SUMMIT Licensed REAA 2008

GORDON WEBB
Top Salesperson 2007/2008/2009/2010
Runner Up 2005/2006 | Top Office 2014/2015
in Summit Real Estate MREINZ

Tasman - Nelson - Marlborough

Having grown up in this fantastic little village and seeing it blossom and thrive, I truly believe that my team and the passion and knowledge I have for the area will get you the very best results.

'A Good Deal Better'



Gordon Webb
Residential & Rural Branch Manager
021 540 241 | 544 2900
gordon.webb@summit.co.nz
summit.co.nz

What's on at Ruby Bay Store

CLAYTON PLAYS DYLAN
When Clayton Taylor played at the Store with The Revelators we noticed he could sing uncannily like the man in the hat ... With guests Nathan Torvik (guitar) and Geert Hermsen (harmonica).
Saturday 1 April 7.30 pm, \$25



AMERICAN ROOTS
Talented singer/songwriter and guitarist **Ruth Wyand's** forte is American roots music: jazz, blues, folk, country. From Kill Devil Hills, North Carolina, she brings her songs plus classics from Hendrix to Nina Simone.
Saturday 8 April 7.30 pm, \$25

BEARDED FOLK FROM UP NORTH
An uplifting folk band from New Plymouth, **Turkey the Bird** (Andre Manella, Adrian Whelan and Sol Bear Coulton—Swiss, Irish and Kiwi in that order). Expect three-part harmonies and toe-tapping rhythms; a little bit Mumford & Sons, a little bit Simon & Garfunkel. Sunday 16 April 3 pm, \$25



CLOSER TO HOME
A plethora of local singer/songwriter talent:
Nick Feint (think Billy Bragg); **Flo Pauls**, Riverside Community resident inspired to guitar loop by Ed Sheeran; and Phoebe and Ruby of **Pluto's Eyes** (above) whose sound is folky, indie, rock-pop. Prepare to dance!
Saturday 29 April 7.30 pm, \$20



FOR LEASE
Cafe / Tearooms
We are looking to lease the Store's cafe/tearooms. Fully equipped commercial kitchen, espresso machine, furnished, three loos. Spacious inside and out. 027 362 0484

BOOK ONLINE
www.rubybaystore.co.nz
Check our website for details and other events.
The Store opens for refreshments 30 minutes before each show.
rubybaystore@gmail.com
174 Stafford Drive
Ruby Bay

April 2023

We've hit the ground running with the new committee getting straight down to business & making new connections, lining up events & projects up for the year ahead. Exciting times.

March Networking Event

Our first networking event was held at The Playhouse Café on Tuesday 21 March. It was a great event meeting the new committee, new & not so new members, so we could check in with each other & see how the first few months of 2023 had been going. With the second part of the evening being an open Q & A with Vincent Revell from Frequency, the Mayor Tim King & TDC councillors on the 'Streets for People' project in Mapua. It was an interactive & informative discussion for all parties.

**April Lunch & Learn, Mapua Hall
Wednesday 5 April, 12.15—1.30pm**

TOPIC: Business resilience, panel discussion

Business resilience is critical in today's business environment. There are opportunities if you look in the right places. What you need is to be able to "work" on your business & take some time away from "working" in your business. The panel will include a number of business experts and members of the MDBA. There will be an open Q&A session as part of this L&L. **RSVP** mdba@mapua.co.nz by **Tues 4 April 4pm**.

Till next month, cheers from the MDBA.

A FEW WORDS FROM GORDON SHAW, MDBA CHAIR...

"It is an honour to serve as our associations Chair. The 2023 year ahead has many opportunities and challenges to be taken and dealt with. The MDBA is in good heart and positioned well to be the voice of business in our district. We have lots to do and the new committee is committed to strongly representing the business interests of our members in the district and to be the coordinated voice of business so that we enhance the economic potential of our members to enable our businesses, people and places to thrive.

The five key and immediate areas of focus for the committee are:

1. Providing value to members.
2. Production of the Mapua map and members directory.
3. Focused engagement with our stakeholders and partners on key items for business.
4. Membership retention and growth.
5. Networking and members doing business with members.

In the past month MDBA has engaged with our local councillors, met with the Mapua residents' association, engaged with TDC officials, met with the Boat ramp trust, met with the team at Business Assist – Nelson Tasman Business Trust and arranged the first members networking meeting of the year.

I have been also looking for opportunities for non-retail office space and business accommodation opportunities in the Mapua village and surrounds and will keep you updated on our continued progress each month."

Gordon Shaw—chair@mapua.co.nz




Trusted for over 50 years



**Plumbing
Gas
Drainage**

03 547 0002
www.clyne-bennie.co.nz

No job too big, too small or too ugly

Māpua Fruit & Vege

- We sell fresh flowers
- local produce when possible

Open 7 days, 8 am - 6 pm
Opposite the school
027 430 7232

Mahana Electrical

All servicing, repairs & installations.
Domestic, commercial & rural.

Phone Simon: 021 994 306

Playcentre

Come and play at Māpua playcentre behind the tennis courts at 84 Aranui Rd.
Find us there Mondays and Thursdays 9.30am-12 during term time
Everyone welcome, see you there!

mapua@playcentre.org.nz

Noticeboard

Stamp & Coin collections in Māpua/Ruby Bay & the Moutere evaluated & purchased. Nick Ferrier 021 688243

New Book Group meeting 3rd Tuesday of the month 2-4 pm. Call Vanessa 0223630219 Or Sue 0212671317

Playcentre: behind the tennis courts at 84 Aranui Rd. Come & play – Mondays & Thursdays 9.30-noon during term time. mapua@playcentre.org.nz

Pastel Artists Nelson: meet Tuesdays 9am-noon, Bill Marris room, Hall. Visitors welcome. Marg: 027 257 1857

Coastal Stringers: Ukulele & guitar group meet Fridays 1-4pm at Bowling Club. All welcome, just arrive & enjoy the singing. Contacts: Colleen 5403010, Diane 5402627.

Māpua Women's Rec Group. Come and join our friendly social walking group. Meet outside Tessa Mae's Thursdays 9.15am. Options for all fitness levels plus activities and social events. mapuarecgroup@gmail.com or just turn up.

Knit & Natter group now at Appleshed: 10am Tuesdays. Contact: Debbi 027 327 4055

Local Women's Walking Group - all welcome to our Tuesday morning walk of 5-7km leaving 9am - call Lynley 03 540 2292 for more information.

Māpua Craft Group: Meetings may change this year. Contact Julie Cox 0277418575 or Barbara Halse 5403901.

Motueka Toastmasters: Like to speak with more confidence? Friendly supportive environment. Meet 1st & 3rd Weds, 6.45-8.30pm, St Johns rooms, Jack Inglis hospital, 15 Courtney St, Motueka. Visitors welcome. Info Sierra 027 8444765 or Peter 027 7468311.

Re-cycle Printer Cartridges at the library. Volunteers are happy to collect printer & photocopier cartridges and transport to recycling centre. Blue bin in our foyer.

Tasman Golf Club: Mixed Social 9 Holes of Golf. Tee off 9.30am Fridays. Friendly group, all levels very welcome. Cost: \$25 for non-members. Ph: Lyndal 03 5266819, teeup@tasmangolffclub.com or just turn up at Kina

Māpua Community Choir: 4 part harmony, no audition necessary, small koha, Māpua Hall 7.15pm Thursdays, enquiries Helen: n-h.bibby@actrix.co.nz

Tasman Dippers: A casual collection of people who enjoy connecting with the open water. Year-round dips or swims in the sea at Rabbit Island. Info: www.tasmandippers.nz

Māpua Boat Club welcomes new members. No boat required. Social nights Thursdays 5.30 - 7pm at Club rooms on Māpua Wharf. Raffles, cash bar, snacks, regular guest speakers. To join, contact Secretary, Katrina 0211393945

Stamp Collectors - anyone interested in forming a group or having their collections evaluated – contact Nick Ferrier 021 688243

Quakers meet at Family Service Centre, Motueka 10am 2nd Sundays. All welcome. Enquiries: Linda 027 447 6435.

Indoor bowls at Māpua Hall on 3rd & last Fridays. Bowls at 2pm followed by "bring a plate" afternoon tea. \$3. Māpua Friendship Club. Contact Val, 540-3685

Māpua Art Group meets Bill Marris Room Māpua Hall Thursdays, 9-noon. Paint, draw, help each other in a social environment. All levels & media. \$5 incl morning tea. Tables, chairs, easels provided. Barbara Glass 027 443 1121

MDCA: Māpua & Districts Community Association meets Feb-Dec, 2nd Mondays, 7pm Māpua Hall; info@ourmapua.org

Kids 'n' Koffee Playgroup: Wednesdays 10-noon during term time, at the old church building. 0-6 year olds. Morning tea provided. Gold coin donation. Info: pippie.d@gmail.com

Fibre Craft Sunday. Birch Hall, Richmond A&P Showgrounds. Last Sundays 1.30-3.30pm. Learn to spin, knit, felt or weave. \$5 includes tea or coffee. All ages welcome. Richmond Creative Fibre Group: Diane 547-6517 or Karyn 544-9709

Spinners, Knitters, Weavers: Creative Fibre Group, Māpua Hall, second Tuesdays 10am. All welcome.

Toy Library: extensive selection of toys, puzzles & videos for children 0-5yrs. Māpua Hall every 1st & 3rd Tuesday, 10-11am & 6.30-7.30pm, 1st & 3rd Friday 3-4pm. mapuatoylibrary@gmail.com

Ruby Coast Walking Group meets 9.30am Wednesdays by Tasman Store. Walk 1½ hrs then coffee & muffins back at the Store. All welcome. Fiona: 021 232 6089 for more info.

Ruby Coast Running Club: 5k run Thursday nights 5:30pm. Also runs most mornings. Find us on Facebook or contact Debbi 027 327 4055.

RSA: Anyone interested in joining Moutere Hills RSA is welcome. No former service history required. Great platform to catch up & meet new members. Nic Poultney 021 220 3920 or 548-4420

Motueka Senior Net. Tech for mature adults. Monthly meetings. Help sessions 2x/month. De-mystify technology in a fun & friendly forum. Clubrooms 42 Pah St, Motueka. Seniornetmotueka.org.nz

Coastal Garden Group meets 1pm first Thursdays, Tasman Bible Hall (opp. Jesters). Men and women most welcome to share their love of gardening. Guest Speakers, Workshops, Garden Visits. Ph 03 265 1842

Sing Your Lungs Out! Free community singing group for anyone with respiratory issues, morning tea. Singing improves your lung health! 10am Mondays, Te Awhina Marae, Pah St, Motueka. Pip 0274 282 693

Ruby Coast Newcomers Social Group: meet new people, make new friends. Coffee 10am last Fridays at Tasman Store and occasional social events. Just turn up. Vivien/Richard 526-6707

Tasman Area Community Association (TACA) 7.30pm last Thursdays (x Dec) Tasman Bible Church. Residents of Ruby Bluffs to Tasman & Kina welcome. Info: Facebook or www.tasmancommunity.org.nz

Nelson Trout Fishing Club: 7pm 3rd Wednesdays, Fish & Game Rooms, 66/74 Champion Rd, Stoke. Beginner or expert. Courses, field trips, speakers. Open to all ages. Info: 03 5476432, secretary@nelsontroutfishingclub.com

Motueka Scottish Country Dance Club: Weds 7.30pm Lower Moutere Hall Scout den. No partner needed, dress casual, wear soft flat shoes, beginners welcome. Good exercise, lively music. Contact Fay 021 039 3559 or Alison 0220 363 891.

Club Notices are free. Others by gold coin donation to one of the distribution boxes.

Coastal News: you can download the pdf from www.coastalnews.online—now printed in colour by TDC!

Contact us: news@coastalnews.online